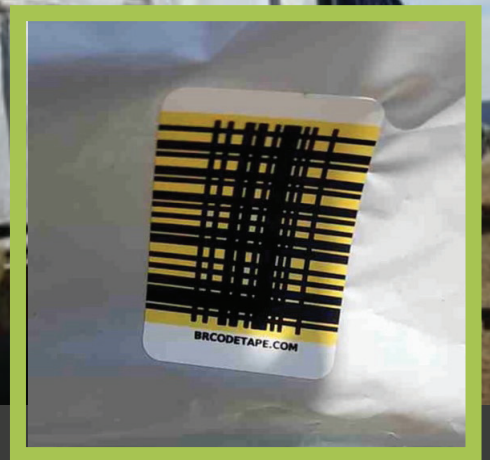


PERFORMANCE CONTRACTING INC. CASE STUDY





The image shows an aerial map of a construction site. A green banner at the top contains the text 'APP AND SCANNABLE LABELS PROVIDE HUGE JOBSITE SAVINGS'. The map includes several callouts: 'Petro Truck Stop' at the top, 'CONSTRUCTION ENTRANCE GUARDHOUSE' in the center, 'RING ROAD' on the left, and 'PCI Off-site Staging' on the right with the address '473 Glendale Hodgenville Rd. W Glendale, KY 42740'. A small inset map shows the site's location relative to a road network. A red box at the top right provides directions: 'Coming from North or South: Exit 86 on I-45 and head East to 2148 (S. Olive Hwy) - Turn right heading South and continue down to the next street 'Vanguard Church Road' - Turn Right (West) and take all the way to 'Loggers Rd.' - Turn Right (South) and take to the the water city construction entrance'. Other labels on the map include 'PLEASE MEET INSIDE THE TRUCK TRAILER' and 'EMPLOYEE'.

APP AND SCANNABLE LABELS PROVIDE HUGE JOBSITE SAVINGS

CLIENT:

Performance Contracting Inc.
(PCI)

PRODUCTS:

BitRip® Mobile App
BR Code™ PXL Labels from
Duck Pro® by Shurtape®

LOCATION:

Elizabethtown, KY

THE CHALLENGE:

PCI needed to manage and track the location of wall panels on a huge electric car battery plant jobsite.

THE SOLUTION:

BitRip® and BR Code™ labels from Duck Pro® by Shurtape® saved immense time and resources that improved productivity and reduced “big headaches.”

BitRip® and BR Code™ labels from Duck Pro® by Shurtape® provide Performance Contracting Inc. with indispensable material tracking capabilities.

One of the leading specialty contractors in the U.S., Performance Contracting Inc. (PCI) provides over 25 types of services and products to the industrial, commercial, and non-residential markets – from complex interior build-out services to large-scale insulation systems and scaffolding. Serving as a true single-source contractor for customers throughout the U.S. and Canada, the company prides itself on “providing value that exceeds customers’ expectations.”

Employing nearly 9,000 people across the U.S. and ranked in 2021 by *ENR Magazine* as the #1 – Wall and Ceiling Contractor in the U.S.; #13 – Specialty Contractor in the U.S.; and #8 – Asbestos Abatement Contractor in the U.S., PCI is the largest subsidiary of Performance Contracting Group (PCG).

With an organization that size, keeping track of materials is no small task. Even drilling down to managers on a single jobsite knowing when materials arrive and where they’re stored can prove challenging.

A particularly challenging site is located on roughly 1,600 acres near

Elizabethtown, KY, and features two 3.5-million-sq-ft buildings where electric car batteries are manufactured for Ford. PCI’s material management team onsite – Brandon Brody, Justin Lehman, and Treasure Journey – had been using traditional material tracking methods (Excel sheets and forms) and sought a better way of knowing exactly where materials were at any given moment. Specifically, shipments of prefabricated panel walls were arriving onsite in three or four truckloads a week, and the team needed better visibility of their whereabouts.

While the team was researching material tracking methods, PCI colleagues from another jobsite in Indiana recommended a free app and inexpensive scannable labels solution that had been successfully employed there. The free app, BitRip®, and scannable BR Code™ labels from Duck Pro® by Shurtape® turned out to be just the solution the team had been seeking.

CONCEIVED IN FIELD COMBAT

Retired U.S. Marine, Nick Dimitruk, conceived the app and label solution in field combat operations and later co-founded the BitRip parent company, Nastro Technologies, with Catherine Chapman. “We were in dirty, rapidly changing, dangerous places and using expensive, mission-critical gear. We realized that people



in other industries had the same headaches, stress, and urgency to get the mission done quickly and effectively, so we invented this technology," Dimitruk said.

At this jobsite, each preprinted code links to a cloud-based file or "Bit," that can store massive amounts of data and tracks every scanned location, unlocking field-level visibility. "We did our trial run tracking some panels for the first building here on the site and we liked it," Brody said.

"We didn't know where a certain bundle was, but BitRip definitely allows us to locate where it is."

— TREASURE JOURNEY, ASSOCIATE PROJECT MANAGER, PCI

Both mineral fiber insulation and foam wall panels are used on this site. Since the mineral fiber panels are moisture sensitive, they're stored in tents inside the warehouse. The foam panels are stored outside.

"These are active, moving panels, they move every day, throughout our three yards, and even the yards themselves are moving around, the warehouse is moving things. We don't know when the panels are going to be installed," Brody added.

TAKING TRACKING FROM STATIC TO DYNAMIC

According to Journey, BitRip transforms the tracking process from static to dynamic. "It allows more people to interface on it versus just the office staff, usually on the computers using Excel. It allows the field staff to have their input on the Bit. It's more collaboration, a lot less loss of communication with everyone having access to it," she said.

As soon as the PCI staff receives the panels from the manufacturer at the construction yard, they affix a BR Code label onto the end of the panel and scan it into the system

by creating a Bit. Then they take a picture of the manufacturer's tags that come on every bundle of panels and every bundle is also tagged with a BR Code label and loaded into the BitRip app so everyone on the team has access to it.

The team monitors all that information from the onsite construction trailers, and it can also be monitored remotely by anyone who has been granted permission. Journey explained that before using BitRip, bundles had gone missing onsite "all the time." "We didn't know where a certain bundle was, but BitRip definitely allows us to locate where it is. BitRip has prevented what was frequently a headache, a big headache."

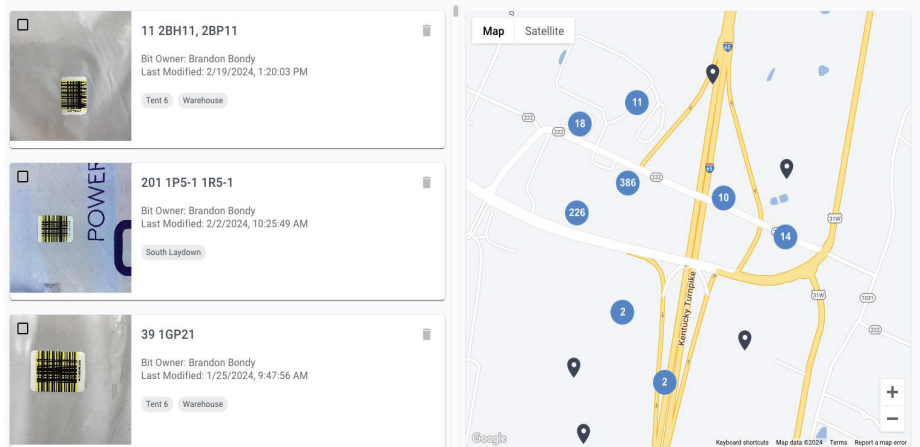
When each panel is installed, the installers simply scan the BR Code label, providing the material

management team with a real-time update. Shurtape offers a variety of BR Code labels for a variety of applications.

- FL 227 BR scannable paper tape codes are ideal for indoor use, can be torn at any length and will conform to a range of surfaces and substrates while offering easy removal.
- PC 627 BR scannable duct tape codes are built for durable adhesion to multiple surfaces, and are constructed with a waterproof backing, allowing for indoor or outdoor use.
- PSL BR scannable labels and PXL BR heavy duty scannable labels peel off individually for ease of use while providing quick, easy and permanent adhesion to a variety of flat surfaces and substrates.

ADVANTAGES:

- The free mobile app and preprinted labels help prevent panels from "going missing"
- Codes attached to each panel, and each bundle, allow detailed tracking with each scan
- Extremely simple setup and implementation saves time and energy
- Attaching labels and scanning upon delivery helps ensure accuracy



PCI uses PXL BR labels, and they've withstood the abuse heaped upon them in construction yard, warehouse, installation zones, and UV light exceedingly well. "We've had no issues at all and no complaints," Brody said.

PERFORMING AS DESIGNED: FOR SIMPLICITY

Brody said getting started with BitRip was quite straightforward and quick. Everyone who interfaces with the panels installs BitRip on their phone and receives a small instruction sheet with basic directions. "It was pretty simple for the guys in the field and the guys unloading the panels to use BitRip. Knock on wood, no one's had much trouble at all doing it," he said.

Any of the team's time that isn't spent physically looking for (or at) the bundles is time – and money – saved. "It's worked great, everyone's stayed on top of it, and it has been very useful. We haven't gotten full blown in using BitRip, but we can see how it's going to help. Every bundle is tagged, so we have somewhat of an idea of its location," Brody said.

Journey added that BitRip is a big time-saver even in just verifying deliveries, for instance if a partial

How to Use Duck Pro® by Shurtape® BR Code™ in 3 Simple Steps:

Stick. Scan. Connect™

Stick. Apply a piece of BR Code tape or a label to an object.


Scan. Scan the tape or label code using a mobile device and the BitRip® app to record the timestamp, capture the geolocation data and begin uploading information.

Connect. Create project teams, set notifications and share the information with others across your organization using nothing more than a piece of tape, a mobile device and a free app.

 [Get to know BR Code.](#)



instead of a full order was delivered. "So, knowing which bundle numbers came on, which truck when they get tagged, that's a big-time saver instead of tracking them down and crossing our fingers that they got delivered today," she said. Going forward, this

PCI team sees BitRip and BR Codes playing a key role in their material management process and potentially helping other processes. 

Get started with BitRip TODAY!

Download it here:



www.bitrip.com

STICK. SCAN. CONNECT.™



(361) 296-5606 | 7 Caleb Circle, San Antonio, TX 78258 | sales@bitrip.com